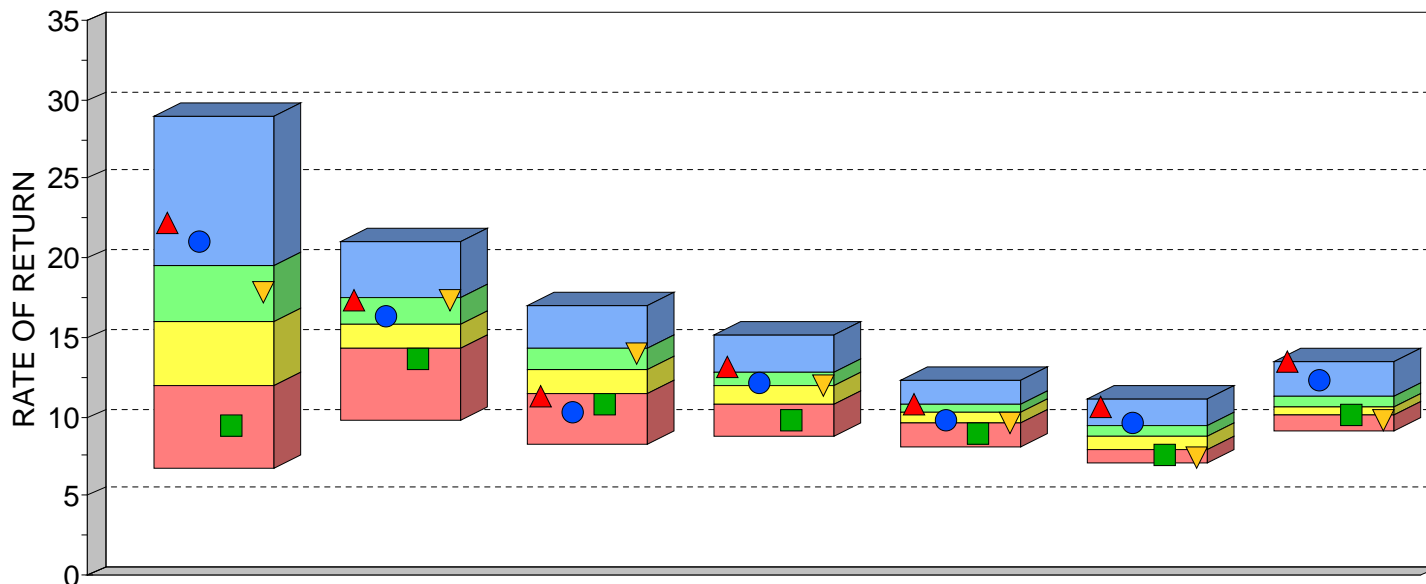




**SOUTH ATLANTIC CAPITAL (SACM) CORE EQUITY  
VS ALL PSN LARGE CAP MANAGERS, PERIOD ENDING SEPTEMBER 30, 2018  
SOUTH ATLANTIC RANKS IN THE TOP 1% SINCE INCEPTION\***



	1 Year	3 Years	5 Years	10 Years	15 Years	20 Years	Since Inception
HIGH (0.05)	28.96	21.06	17.05	15.11	12.35	11.16	13.42
FIRST QUARTILE	19.59	17.48	14.29	12.83	10.76	9.45	11.23
MEDIAN	16.00	15.90	12.98	11.87	10.22	8.69	10.63
THIRD QUARTILE	11.89	14.36	11.50	10.78	9.61	7.94	10.11
LOW (0.95)	6.73	9.84	8.18	8.83	8.10	7.05	9.07
MEAN	16.27	15.90	12.93	11.87	10.19	8.76	10.69
VALID COUNT	868	845	819	695	514	315	146

	1 Year		3 Years		5 Years		10 Years		15 Years		20 Years		Since Inception	
	VALUE	RANK	VALUE	RANK	VALUE	RANK	VALUE	RANK	VALUE	RANK	VALUE	RANK	VALUE	RANK
▲ South Atlantic SACM Core Equity	22.18	14	17.40	25	11.34	77	13.21	19	10.75	25	10.58	5	13.46	1
● South Atlantic SACM Core Equity NET	20.98	19	16.25	43	10.25	89	12.10	41	9.69	70	9.52	23	12.36	4
■ Russell 1000 Value	9.45	91	13.55	84	10.72	85	9.79	92	8.89	92	7.64	83	10.05	78
▼ Standard & Poor's 500	17.91	35	17.31	27	13.95	32	11.97	47	9.65	72	7.42	91	9.74	87

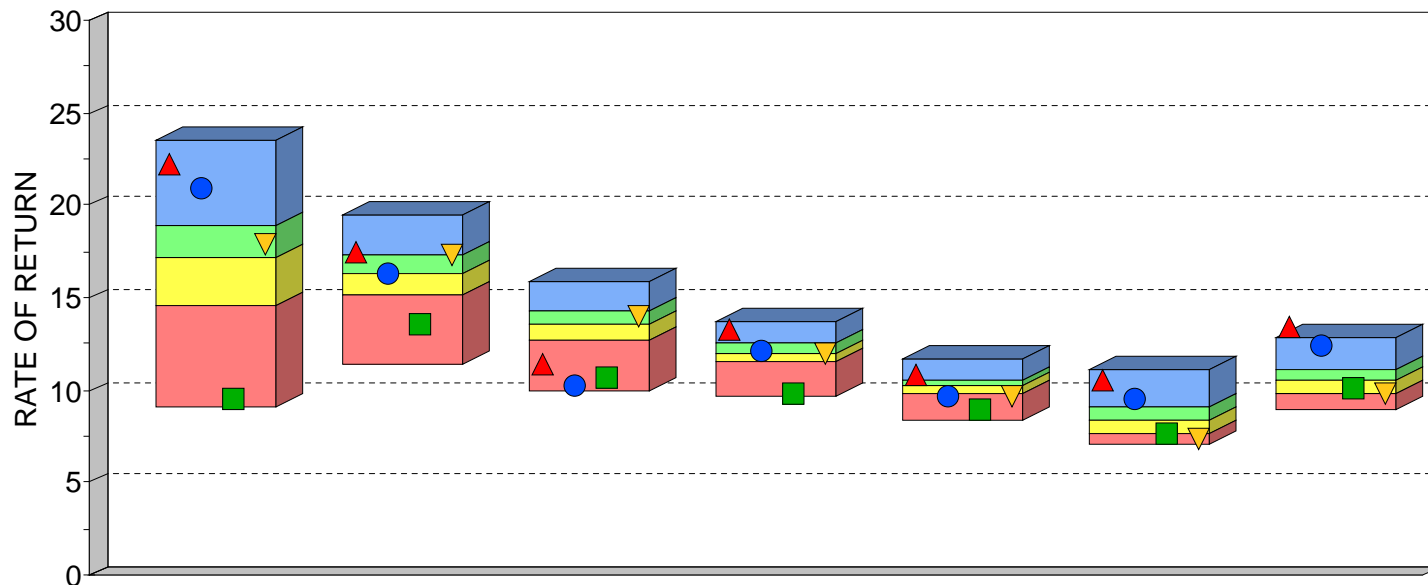
\*PSN'S LARGE CAP MANAGER'S RETURNS AND SOUTH ATLANTIC LARGE CAP RETURNS ARE REPORTED AND RANKED GROSS OF FEES. ADDITIONALLY, SOUTH ATLANTIC CAPITAL REPORTS PERFORMANCE NET OF FEES. SOUTH ATLANTIC CORE EQUITY INCEPTION DATE IS DECEMBER 31, 1991.

PSN IS A GLOBAL INVESTMENT MANAGER DATABASE OF APPROXIMATELY 2,000 INVESTMENT MANAGERS REPRESENTING MORE THAN 20,000 DOMESTIC AND INTERNATIONAL INVESTMENT PRODUCTS, AND IS A DIVISION OF INFORMA INVESTMENT SOLUTIONS, INC. (IIS). ALL PRODUCTS ARE REVIEWED QUANTITATIVELY ON A QUARTERLY BASIS AND ON THIS REPORT, RANKED AGAINST OTHER INVESTMENT MANAGERS IN THE LARGE CAP EQUITY ASSET CLASS. THE ABOVE REFERENCED SOUTH ATLANTIC CAPITAL MANAGEMENT PERFORMANCE AND OTHER MANAGERS PERFORMANCE RESULTS ARE GROSS OF FEES. SACM PERFORMANCE NET OF FEES COULD BE AS MUCH AS 1.5% LOWER THAN PERFORMANCE GROSS OF FEES. ALL RATES OF RETURN OVER 1 YEAR ARE ANNUALIZED. RANKINGS ARE NOT INDICATIVE OF FUTURE PERFORMANCE. THIS INFORMATION IS PROVIDED AS A SUPPLEMENT TO A GIPS COMPLIANT PRESENTATION.

PAST RESULTS ARE NOT INDICATIVE OF FUTURE INVESTMENT RESULTS. AN INVESTOR SHOULD FURTHER UNDERSTAND THAT FUTURE RESULTS MAY RESULT IN LOSSES FOR ACCOUNT HOLDERS.



**SOUTH ATLANTIC CAPITAL (SACM) CORE EQUITY  
VS ALL PSN LARGE CAP CORE MANAGERS, PERIOD ENDING SEPTEMBER 30, 2018  
SOUTH ATLANTIC RANKS IN THE TOP 1% SINCE INCEPTION\***



	1 Year	3 Years	5 Years	10 Years	15 Years	20 Years	Since Inception
HIGH (0.05)	23.53	19.54	15.81	13.73	11.69	11.11	12.84
FIRST QUARTILE	18.88	17.31	14.29	12.53	10.59	9.14	11.09
MEDIAN	17.19	16.24	13.56	12.01	10.24	8.38	10.49
THIRD QUARTILE	14.64	15.21	12.70	11.47	9.75	7.70	9.78
LOW (0.95)	9.10	11.44	9.99	9.67	8.38	7.05	8.99
MEAN	16.80	16.17	13.43	11.96	10.18	8.52	10.48
VALID COUNT	249	242	234	201	157	98	46

	1 Year		3 Years		5 Years		10 Years		15 Years		20 Years		Since Inception	
	VALUE	RANK	VALUE	RANK	VALUE	RANK	VALUE	RANK	VALUE	RANK	VALUE	RANK	VALUE	RANK
▲ South Atlantic SACM Core Equity	22.18	2	17.40	21	11.34	93	13.21	10	10.75	19	10.58	4	13.46	1
● South Atlantic SACM Core Equity NET	20.98	10	16.25	49	10.25	98	12.10	43	9.69	77	9.52	16	12.36	4
■ Russell 1000 Value	9.45	99	13.55	94	10.72	97	9.79	99	8.89	95	7.64	77	10.05	65
▼ Standard & Poor's 500	17.91	38	17.31	24	13.95	37	11.97	54	9.65	80	7.42	91	9.74	80

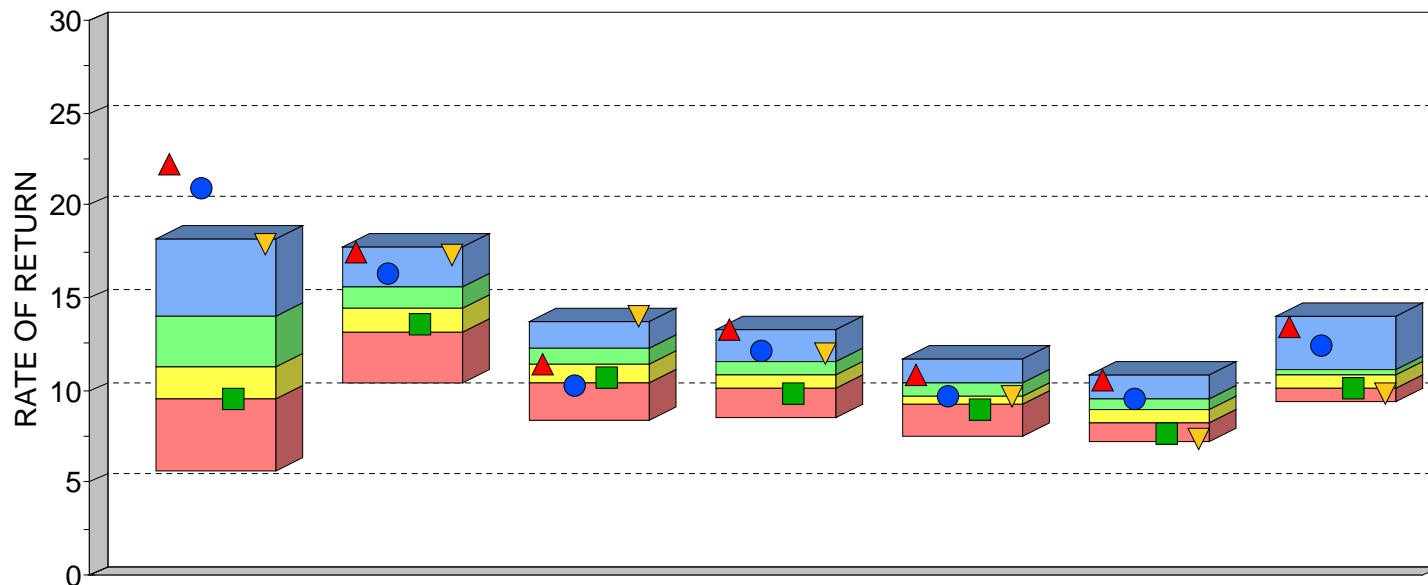
\*PSN'S LARGE CAP MANAGER'S RETURNS AND SOUTH ATLANTIC LARGE CAP RETURNS ARE REPORTED AND RANKED GROSS OF FEES. ADDITIONALLY, SOUTH ATLANTIC CAPITAL REPORTS PERFORMANCE NET OF FEES. SOUTH ATLANTIC CORE EQUITY INCEPTION DATE IS DECEMBER 31, 1991.

PSN IS A GLOBAL INVESTMENT MANAGER DATABASE OF APPROXIMATELY 2,000 INVESTMENT MANAGERS REPRESENTING MORE THAN 20,000 DOMESTIC AND INTERNATIONAL INVESTMENT PRODUCTS, AND IS A DIVISION OF INFORMA INVESTMENT SOLUTIONS, INC. (IIS). ALL PRODUCTS ARE REVIEWED QUANTITATIVELY ON A QUARTERLY BASIS AND ON THIS REPORT, RANKED AGAINST OTHER INVESTMENT MANAGERS IN THE LARGE CAP EQUITY ASSET CLASS. THE ABOVE REFERENCED SOUTH ATLANTIC CAPITAL MANAGEMENT PERFORMANCE AND OTHER MANAGERS PERFORMANCE RESULTS ARE GROSS OF FEES. SACM PERFORMANCE NET OF FEES COULD BE AS MUCH AS 1.5% LOWER THAN PERFORMANCE GROSS OF FEES. ALL RATES OF RETURN OVER 1 YEAR ARE ANNUALIZED. RANKINGS ARE NOT INDICATIVE OF FUTURE PERFORMANCE. THIS INFORMATION IS PROVIDED AS A SUPPLEMENT TO A GIPS COMPLIANT PRESENTATION.

PAST RESULTS ARE NOT INDICATIVE OF FUTURE INVESTMENT RESULTS. AN INVESTOR SHOULD FURTHER UNDERSTAND THAT FUTURE RESULTS MAY RESULT IN LOSSES FOR ACCOUNT HOLDERS.



**SOUTH ATLANTIC CAPITAL (SACM) CORE EQUITY  
VS ALL PSN LARGE CAP VALUE MANAGERS, PERIOD ENDING SEPTEMBER 30, 2018  
SOUTH ATLANTIC RANKS IN THE TOP 1% SINCE INCEPTION\***



	1 Year	3 Years	5 Years	10 Years	15 Years	20 Years	Since Inception
HIGH (0.05)	18.16	17.75	13.74	13.29	11.72	10.86	13.96
FIRST QUARTILE	13.97	15.54	12.29	11.57	10.40	9.58	11.14
MEDIAN	11.29	14.42	11.33	10.76	9.66	8.94	10.79
THIRD QUARTILE	9.53	13.19	10.32	10.09	9.20	8.21	10.15
LOW (0.95)	5.57	10.42	8.37	8.56	7.56	7.17	9.41
MEAN	11.67	14.36	11.23	10.80	9.70	8.85	10.80
VALID COUNT	261	258	250	216	161	91	43

	1 Year		3 Years		5 Years		10 Years		15 Years		20 Years		Since Inception	
	VALUE	RANK	VALUE	RANK	VALUE	RANK	VALUE	RANK	VALUE	RANK	VALUE	RANK	VALUE	RANK
▲ South Atlantic SACM Core Equity	22.18	1	17.40	3	11.34	48	13.21	1	10.75	11	10.58	2	13.46	1
● South Atlantic SACM Core Equity NET	20.98	1	16.25	11	10.25	76	12.10	13	9.69	49	9.52	26	12.36	1
■ Russell 1000 Value	9.45	77	13.55	69	10.72	66	9.79	82	8.89	84	7.64	84	10.05	86
▼ Standard & Poor's 500	17.91	1	17.31	3	13.95	1	11.97	16	9.65	50	7.42	90	9.74	95

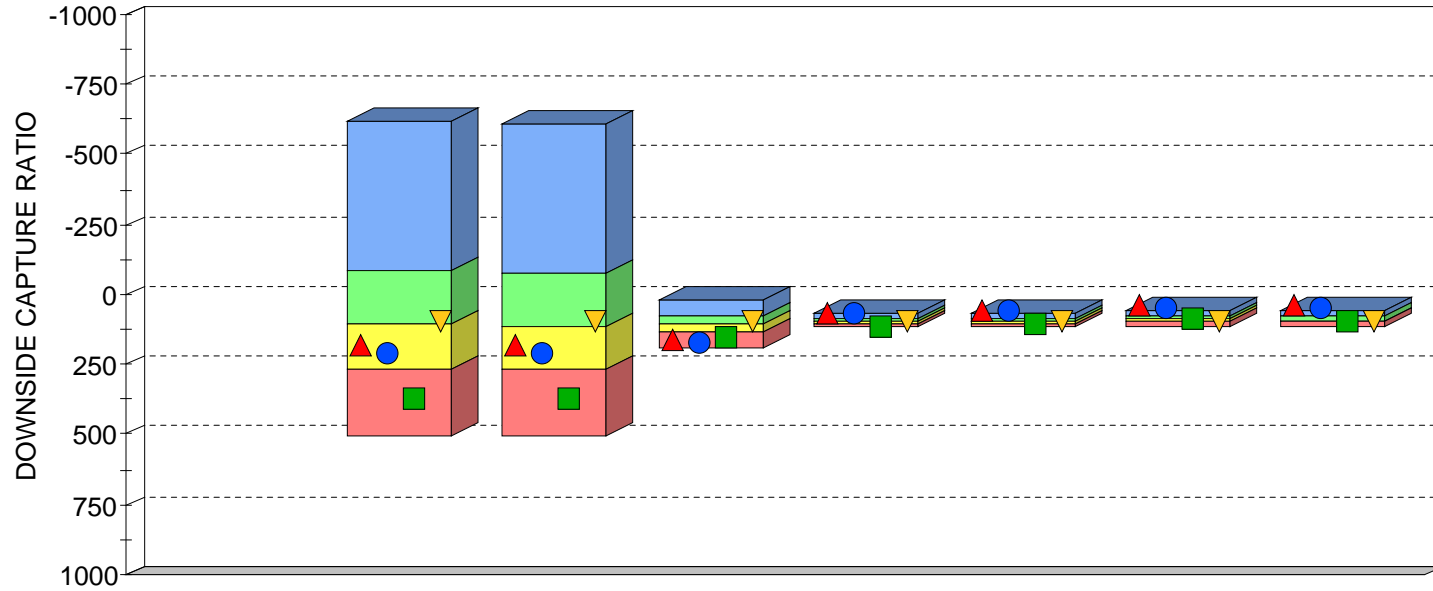
\*PSN'S LARGE CAP MANAGER'S RETURNS AND SOUTH ATLANTIC LARGE CAP RETURNS ARE REPORTED AND RANKED GROSS OF FEES. ADDITIONALLY, SOUTH ATLANTIC CAPITAL REPORTS PERFORMANCE NET OF FEES. SOUTH ATLANTIC CORE EQUITY INCEPTION DATE IS DECEMBER 31, 1991.

PSN IS A GLOBAL INVESTMENT MANAGER DATABASE OF APPROXIMATELY 2,000 INVESTMENT MANAGERS REPRESENTING MORE THAN 20,000 DOMESTIC AND INTERNATIONAL INVESTMENT PRODUCTS, AND IS A DIVISION OF INFORMA INVESTMENT SOLUTIONS, INC. (IIS). ALL PRODUCTS ARE REVIEWED QUANTITATIVELY ON A QUARTERLY BASIS AND ON THIS REPORT, RANKED AGAINST OTHER INVESTMENT MANAGERS IN THE LARGE CAP EQUITY ASSET CLASS. THE ABOVE REFERENCED SOUTH ATLANTIC CAPITAL MANAGEMENT PERFORMANCE AND OTHER MANAGERS PERFORMANCE RESULTS ARE GROSS OF FEES. SACM PERFORMANCE NET OF FEES COULD BE AS MUCH AS 1.5% LOWER THAN PERFORMANCE GROSS OF FEES. ALL RATES OF RETURN OVER 1 YEAR ARE ANNUALIZED. RANKINGS ARE NOT INDICATIVE OF FUTURE PERFORMANCE. THIS INFORMATION IS PROVIDED AS A SUPPLEMENT TO A GIPS COMPLIANT PRESENTATION.

PAST RESULTS ARE NOT INDICATIVE OF FUTURE INVESTMENT RESULTS. AN INVESTOR SHOULD FURTHER UNDERSTAND THAT FUTURE RESULTS MAY RESULT IN LOSSES FOR ACCOUNT HOLDERS.



**SOUTH ATLANTIC SACM CORE EQUITY**  
**QUARTILE RANKING BAR DOWNSIDE CAPTURE RATIO**  
**PSN LARGE CAP**  
**PERIODS ENDING SEPTEMBER 30, 2018**



	Latest Quarter	1 Year	3 Years	5 Years	10 Years	15 Years	20 Years	Since Inception
HIGH (0.95)	N/A	-617.40	-606.61	14.69	70.64	65.79	54.54	53.88
FIRST QUARTILE	N/A	-81.09	-77.22	74.06	89.94	88.84	79.17	80.41
MEDIAN	N/A	107.33	110.20	103.57	97.23	96.07	90.33	90.70
THIRD QUARTILE	N/A	264.61	267.70	132.61	104.11	100.92	98.95	99.98
LOW (0.05)	N/A	505.11	508.36	185.72	116.70	113.22	112.91	112.92
MEAN	N/A	75.86	78.78	102.61	96.67	94.45	88.55	89.78
VALID COUNT	-999	868	845	819	695	514	315	146

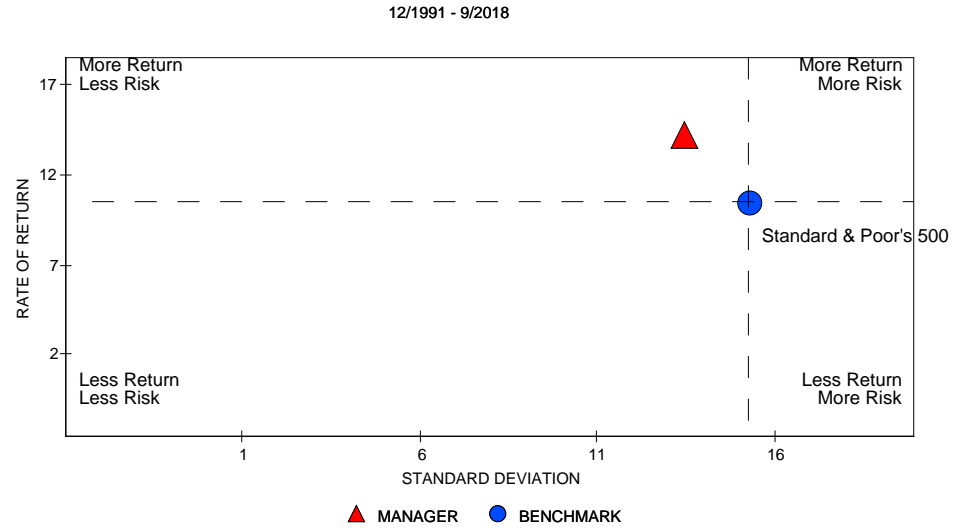
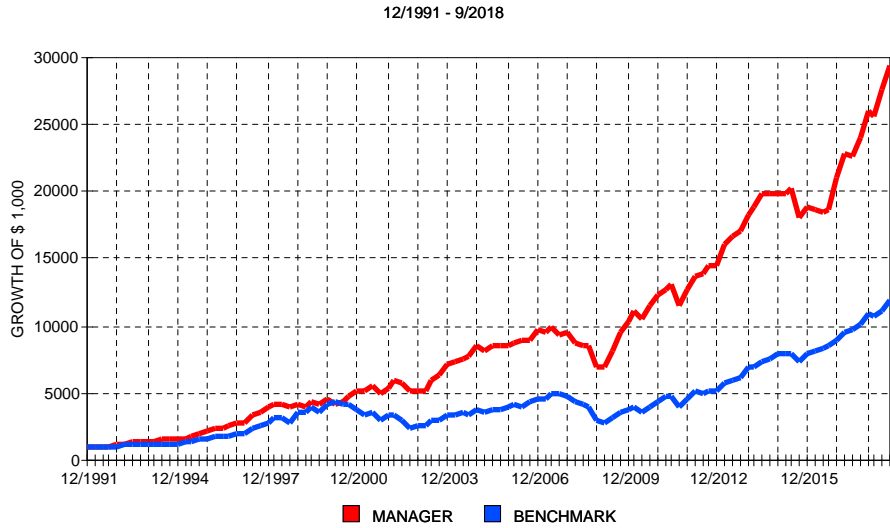
	Latest Quarter		1 Year		3 Years		5 Years		10 Years		15 Years		20 Years		Since Inception	
	VALUE	RANK	VALUE	RANK	VALUE	RANK	VALUE	RANK	VALUE	RANK	VALUE	RANK	VALUE	RANK	VALUE	RANK
▲ South Atlantic SACM Core Equity	N/A	N/A	176.41	62	176.41	61	161.26	94	68.69	1	57.59	1	39.69	1	42.31	1
● South Atlantic SACM Core Equity NET	N/A	N/A	207.62	67	207.62	66	167.30	96	71.29	1	61.00	1	42.92	1	45.80	1
■ Russell 1000 Value	N/A	N/A	373.24	91	373.24	91	153.74	90	112.13	95	104.55	86	90.08	50	90.58	50
▼ Standard & Poor's 500	N/A	N/A	100.00	49	100.00	49	100.00	45	100.00	63	100.00	72	100.00	80	100.00	77

DOWNSIDE MARKET CAPTURE RATIO - MEASURES THE MANAGER'S PERFORMANCE IN DOWN MARKETS RELATIVE TO THE PERFORMANCE OF THE MARKET (INDEX) ITSELF. A DOWN MARKET IS DEFINED AS ANY PERIOD (QUARTER) WHERE THE MARKET'S RETURN IS LESS THAN ZERO. THE LOWER THE DOWN MARKET CAPTURE RATIO, THE BETTER THE MANAGER PROTECTED CAPITAL DURING A MARKET DECLINE. A VALUE OF 90 SUGGESTS THAT A MANAGER'S LOSSES WERE ONLY 90% OF THE MARKET'S LOSS WHEN THE MARKET WAS DOWN.

PSN IS A GLOBAL INVESTMENT MANAGER DATABASE OF APPROXIMATELY 2,000 INVESTMENT MANAGERS REPRESENTING MORE THAN 20,000 DOMESTIC AND INTERNATIONAL INVESTMENT PRODUCTS, AND IS A DIVISION OF INFORMA INVESTMENT SOLUTIONS, INC (IIS). ALL PRODUCTS ARE REVIEWED QUANTITATIVELY ON A QUARTERLY BASIS AND ON THIS REPORT RANKED AGAINST OTHER INVESTMENT MANAGERS IN THE SAME ASSET CLASS. SOUTH ATLANTIC'S CORE EQUITY PRODUCT IS RANKED AGAINST LARGE CAP MANAGERS. THE ABOVE REFERENCED SOUTH ATLANTIC CAPITAL MANAGEMENT AND OTHER MANAGERS PERFORMANCE RESULTS ARE RANKED GROSS OF FEES. SACM PERFORMANCE NET OF FEES COULD BE UP TO 1.5% LOWER THAN PERFORMANCE GROSS OF FEES. ALL RATES OF RETURN OVER 1 YEAR ARE ANNUALIZED. RANKINGS ARE NOT INDICATIVE OF FUTURE PERFORMANCE. THIS INFORMATION IS PROVIDED AS A SUPPLEMENT TO A GIPS COMPLIANT PRESENTATION. SOUTH ATLANTIC CORE EQUITY INCEPTION DATE IS DECEMBER 31, 1991.



# SOUTH ATLANTIC SACM CORE EQUITY PERFORMANCE VS BENCHMARK DECEMBER 31, 1991 TO SEPTEMBER 30, 2018



PERIOD	RATE OF RETURN			GROWTH OF \$ 1,000		
	MANAGER	BENCHMARK	EXCESS	MANAGER	BENCHMARK	PREMIUM
1 Yr	22.18	17.91	4.27	\$ 1,222	\$ 1,179	\$ 43
2 Yrs	25.43	18.26	7.18	\$ 1,573	\$ 1,399	\$ 175
3 Yrs	17.40	17.31	0.09	\$ 1,618	\$ 1,614	\$ 4
4 Yrs	10.11	12.55	-2.44	\$ 1,470	\$ 1,604	-\$ 135
5 Yrs	11.34	13.95	-2.61	\$ 1,711	\$ 1,921	-\$ 210
6 Yrs	12.47	14.83	-2.36	\$ 2,024	\$ 2,293	-\$ 269
7 Yrs	14.30	16.91	-2.61	\$ 2,548	\$ 2,985	-\$ 437
8 Yrs	12.27	14.81	-2.55	\$ 2,523	\$ 3,019	-\$ 496
9 Yrs	13.40	14.29	-0.89	\$ 3,100	\$ 3,326	-\$ 226
10 Yrs	13.21	11.97	1.24	\$ 3,457	\$ 3,096	\$ 361
Inception	13.46	9.74	3.72	\$ 29,321	\$ 12,016	\$ 17,304

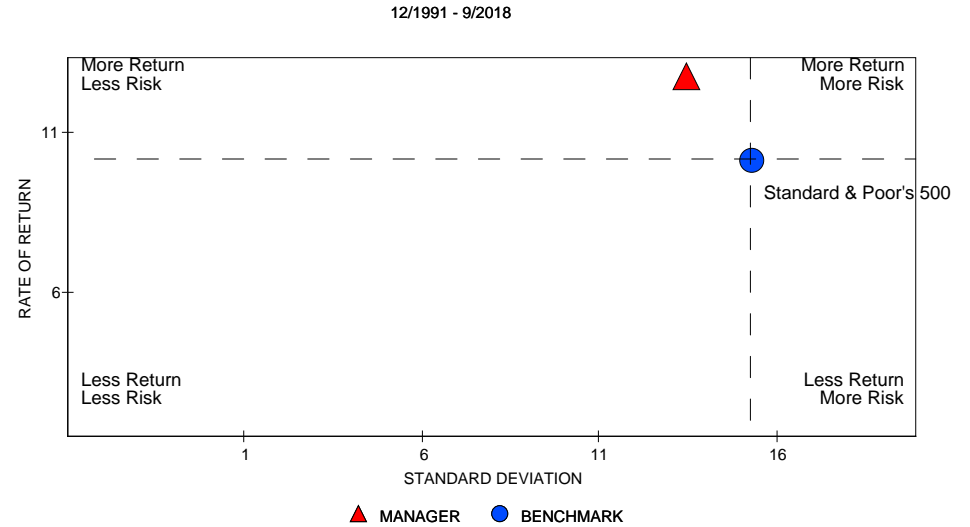
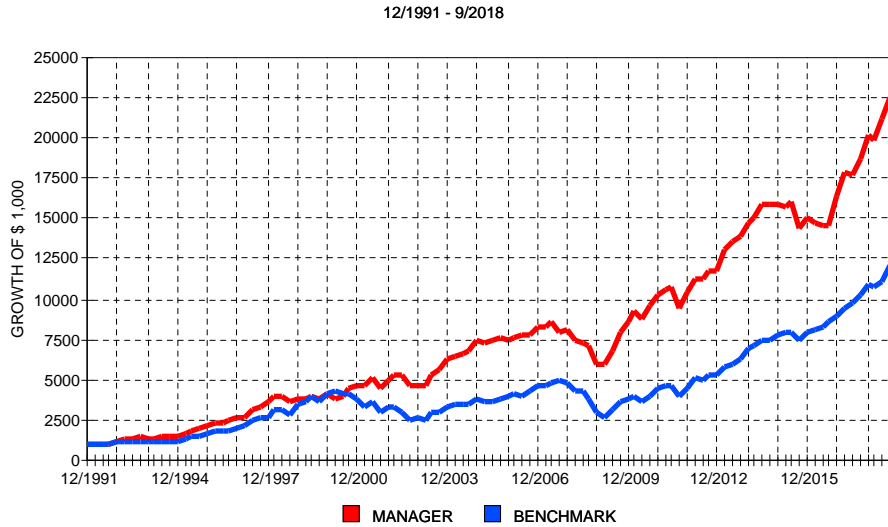
MANAGER: South Atlantic SACM Core Equity  
BENCHMARK: Standard & Poor's 500  
SINCE INCEPTION: 12/1991

	MRQ	2017	2016	2015	2014	2013	2012	2011	2010	2009	2008	Incept
MANAGER	6.51	23.80	10.68	-4.41	8.19	26.97	13.02	3.63	20.19	46.20	-25.98	13.46
BENCHMARK	7.71	21.83	11.96	1.38	13.69	32.39	16.00	2.11	15.06	26.46	-37.00	9.74
EXCESS	-1.20	1.97	-1.28	-5.79	-5.49	-5.41	-2.98	1.52	5.12	19.74	11.02	3.72
90 TBILL	0.52	0.96	0.33	0.06	0.03	0.05	0.08	0.06	0.14	0.15	1.27	2.48

PERIOD	ROR	STDEV	ALPHA	BETA	RSQR	TRCKERR	SHARPE	INFORATIO
3 Yrs	17.40	9.07	-2.43	1.18	0.39	7.12	1.82	0.01
4 Yrs	10.11	10.74	-4.15	1.20	0.58	7.02	0.88	-0.35
5 Yrs	11.34	9.94	-2.89	1.06	0.57	6.46	1.08	-0.40
6 Yrs	12.47	9.89	-2.86	1.07	0.63	6.03	1.21	-0.39
7 Yrs	14.30	9.76	-0.46	0.89	0.61	6.15	1.42	-0.42
8 Yrs	12.27	10.61	0.03	0.84	0.69	6.09	1.12	-0.42
9 Yrs	13.40	10.80	2.12	0.78	0.70	6.42	1.21	-0.14
10 Yrs	13.21	13.54	3.57	0.78	0.78	7.10	0.95	0.17
Inception	13.46	13.12	5.97	0.67	0.58	9.87	0.84	0.38



# SOUTH ATLANTIC SACM CORE EQUITY NET PERFORMANCE VS BENCHMARK DECEMBER 31, 1991 TO SEPTEMBER 30, 2018



PERIOD	RATE OF RETURN			GROWTH OF \$ 1,000		
	MANAGER	BENCHMARK	EXCESS	MANAGER	BENCHMARK	PREMIUM
1 Yr	20.98	17.91	3.07	\$ 1,210	\$ 1,179	\$ 31
2 Yrs	24.20	18.26	5.94	\$ 1,542	\$ 1,399	\$ 144
3 Yrs	16.25	17.31	-1.06	\$ 1,571	\$ 1,614	-\$ 44
4 Yrs	9.03	12.55	-3.52	\$ 1,413	\$ 1,604	-\$ 191
5 Yrs	10.25	13.95	-3.69	\$ 1,629	\$ 1,921	-\$ 292
6 Yrs	11.38	14.83	-3.45	\$ 1,909	\$ 2,293	-\$ 384
7 Yrs	13.19	16.91	-3.72	\$ 2,381	\$ 2,985	-\$ 604
8 Yrs	11.17	14.81	-3.64	\$ 2,333	\$ 3,019	-\$ 686
9 Yrs	12.29	14.29	-1.99	\$ 2,839	\$ 3,326	-\$ 487
10 Yrs	12.10	11.97	0.14	\$ 3,134	\$ 3,096	\$ 38
Inception	12.36	9.74	2.62	\$ 22,565	\$ 12,016	\$ 10,549

MANAGER: South Atlantic SACM Core Equity NET  
BENCHMARK: Standard & Poor's 500  
SINCE INCEPTION: 12/1991

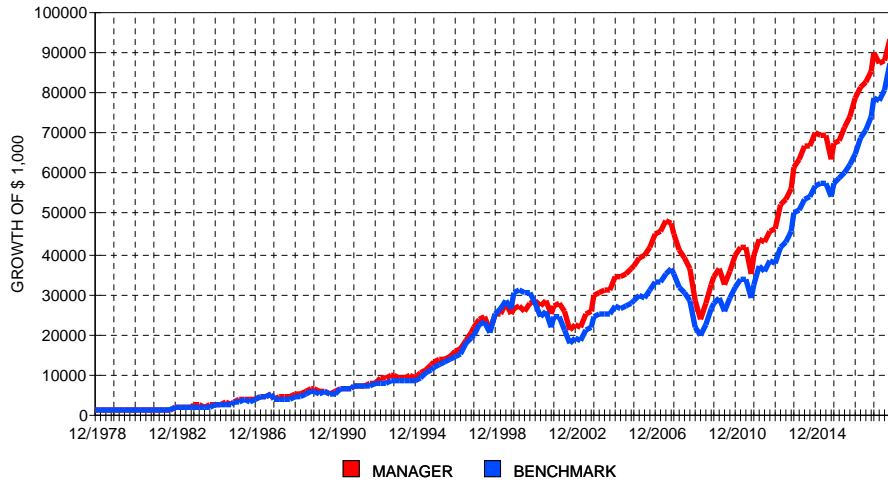
	MRQ	2017	2016	2015	2014	2013	2012	2011	2010	2009	2008	Incept
MANAGER	6.25	22.58	9.58	-5.32	7.16	25.77	11.94	2.59	19.00	44.76	-26.68	12.36
BENCHMARK	7.71	21.83	11.96	1.38	13.69	32.39	16.00	2.11	15.06	26.46	-37.00	9.74
EXCESS	-1.46	0.74	-2.38	-6.71	-6.53	-6.62	-4.06	0.47	3.94	18.30	10.31	2.62
90 TBILL	0.52	0.96	0.33	0.06	0.03	0.05	0.08	0.06	0.14	0.15	1.27	2.48

PERIOD	ROR	STDEV	ALPHA	BETA	RSQR	TRCKERR	SHARPE	INFORATIO
3 Yrs	16.25	9.05	-3.39	1.18	0.39	7.10	1.69	-0.15
4 Yrs	9.03	10.71	-5.09	1.20	0.58	7.00	0.78	-0.50
5 Yrs	10.25	9.92	-3.83	1.06	0.57	6.44	0.98	-0.57
6 Yrs	11.38	9.86	-3.80	1.07	0.63	6.01	1.11	-0.57
7 Yrs	13.19	9.73	-1.43	0.89	0.61	6.13	1.31	-0.61
8 Yrs	11.17	10.59	-0.96	0.83	0.70	6.07	1.02	-0.60
9 Yrs	12.29	10.79	1.11	0.78	0.70	6.41	1.11	-0.31
10 Yrs	12.10	13.51	2.55	0.78	0.78	7.09	0.87	0.02
Inception	12.36	13.09	4.93	0.67	0.58	9.86	0.75	0.27

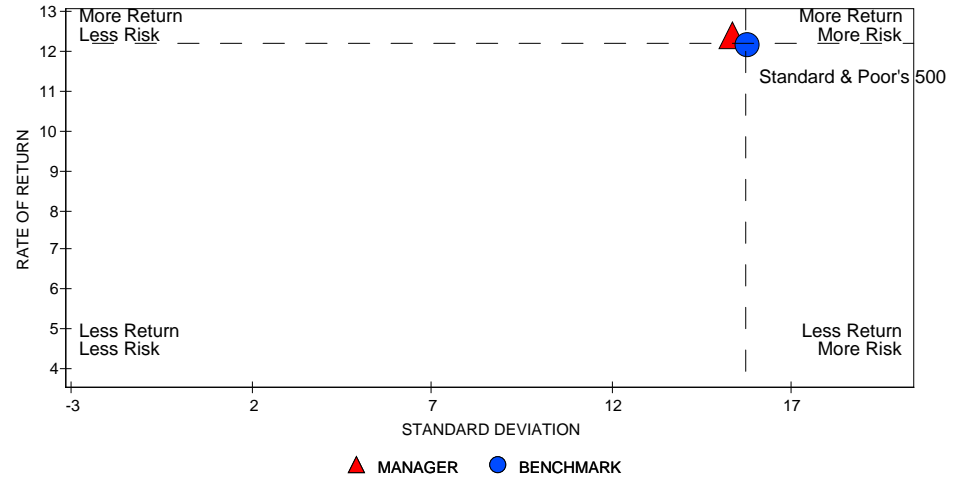


# RUS 1000 VALUE RUS 1000 VALUE PERFORMANCE VS BENCHMARK DECEMBER 31, 1978 TO SEPTEMBER 30, 2018

12/1978 - 9/2018



12/1978 - 9/2018



PERIOD	RATE OF RETURN			GROWTH OF \$ 1,000		
	MANAGER	BENCHMARK	EXCESS	MANAGER	BENCHMARK	PREMIUM
1 Yr	9.45	17.91	-8.46	\$ 1,095	\$ 1,179	-\$ 85
2 Yrs	12.25	18.26	-6.01	\$ 1,260	\$ 1,399	-\$ 139
3 Yrs	13.55	17.31	-3.76	\$ 1,464	\$ 1,614	-\$ 150
4 Yrs	8.76	12.55	-3.78	\$ 1,399	\$ 1,604	-\$ 205
5 Yrs	10.72	13.95	-3.23	\$ 1,664	\$ 1,921	-\$ 257
6 Yrs	12.57	14.83	-2.26	\$ 2,035	\$ 2,293	-\$ 258
7 Yrs	15.02	16.91	-1.89	\$ 2,664	\$ 2,985	-\$ 321
8 Yrs	12.76	14.81	-2.05	\$ 2,613	\$ 3,019	-\$ 406
9 Yrs	12.32	14.29	-1.96	\$ 2,846	\$ 3,326	-\$ 480
10 Yrs	9.79	11.97	-2.18	\$ 2,544	\$ 3,096	-\$ 553
Inception	12.09	11.90	0.19	\$ 93,275	\$ 87,310	\$ 5,965

MANAGER: Russell 1000 Value  
BENCHMARK: Standard & Poor's 500  
SINCE INCEPTION: 12/1978

	MRQ	2017	2016	2015	2014	2013	2012	2011	2010	2009	2008	Incept
MANAGER	5.70	13.66	17.34	-3.83	13.45	32.53	17.51	0.39	15.51	19.69	-36.85	12.09
BENCHMARK	7.71	21.83	11.96	1.38	13.69	32.39	16.00	2.11	15.06	26.46	-37.00	11.90
EXCESS	-2.01	-8.17	5.38	-5.21	-0.24	0.14	1.51	-1.72	0.44	-6.77	0.15	0.19
90 TBILL	0.52	0.96	0.33	0.06	0.03	0.05	0.08	0.06	0.14	0.15	1.27	4.54

PERIOD	ROR	STDEV	ALPHA	BETA	RSQR	TRCKERR	SHARPE	INFORATIO
3 Yrs	13.55	5.07	-0.93	0.84	0.59	3.38	2.49	-1.11
4 Yrs	8.76	7.48	-3.51	1.01	0.83	3.06	1.08	-1.24
5 Yrs	10.72	7.68	-3.07	1.01	0.86	2.91	1.32	-1.11
6 Yrs	12.57	8.03	-2.38	1.03	0.86	3.03	1.51	-0.75
7 Yrs	15.02	9.12	-1.91	1.02	0.90	2.94	1.60	-0.64
8 Yrs	12.76	11.42	-2.49	1.05	0.94	2.86	1.08	-0.72
9 Yrs	12.32	12.07	-2.05	1.03	0.95	2.82	0.99	-0.70
10 Yrs	9.79	16.59	-2.59	1.07	0.96	3.33	0.57	-0.65
Inception	12.09	14.97	0.79	0.92	0.89	5.17	0.50	0.04